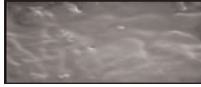


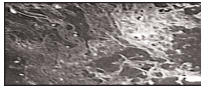
## Effect on Biofilm

### Before/After Treatment with Various Biocides

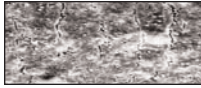
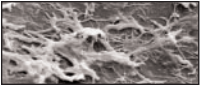
#### Sterilex UltraKleen



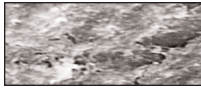
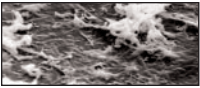
#### Bleach



#### Quaternary Ammonium



#### Glutaraldehyde

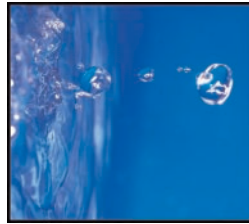


## Recognition of Sterilex Products

- “Bio Product of the Year” Technology Council of Maryland
- Awarded USDA National Research Initiative Grant, “Improved Methods for Control of *Listeria Monocytogenes* Within Biofilms in Meat and Poultry Processing Environments”
- Recommended by top biofilm and infection control experts for remediation of biofilm on health care and institutional equipment
- First company to receive “Biofilm removal” claims for industrial and public health applications by US EPA
- Recommended by QA/QC managers at leading food processing companies
- Clinically proven in numerous studies

*Distributed by:*

Tel: (800) 511-1659  
[www.sterilex.com](http://www.sterilex.com)



11409 Cronhill Drive, Suite L  
Owings Mills, MD 21117

**STERILEX**  
*Solutions for Biofilm.*



# STERILEX<sup>®</sup>

## *Biocides and Disinfectants for Animal Health*



**BEFORE**



**AFTER**

Actual images before and after using Sterilex biocides on a chicken grow-out farm

***Biofilm Removal and Disinfectants For Poultry Water Lines***

**Tel: (800) 511-1659**  
**[www.sterilex.com](http://www.sterilex.com)**



## Advantages of Sterilex® Products

- EPA-Registered to penetrate and remove biofilm
- EPA-Registered disinfectant
- Specifically designed to remove slime and kill bacteria found in water lines
- Prevents plugging of lines and nipple-drinkers
- Disinfection of water lines has been proven to increase chicken livability rates
- Safe, non-corrosive
- Disinfectant cleaner for environmental surfaces and processing equipment
- Easy to use



## What are Biofilms?

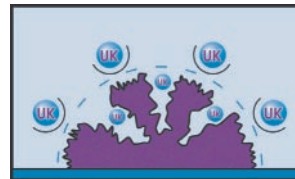
Biofilms are a complex matrix of bacteria, fungi, and algae bound together in a sticky gel of polysaccharide and other organic contaminants attached to a surface. The bacteria produce a slime layer in which they live that anchors them firmly to a surface and which provides a protective environment to grow and reproduce. Biofilms generally form on any surface that is exposed to water or other liquids and are consequently found in many types of environments.

## How Sterilex® Products Work.

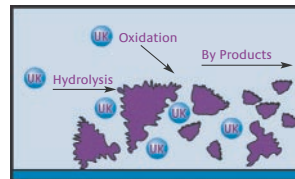
1) Attacks and bombards biofilm.



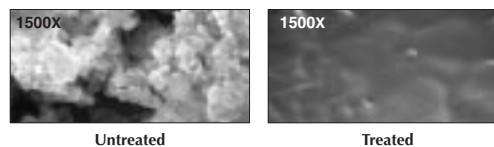
2) Penetrates the outer layer and dissolves into the matrix.



3) Destroys and eliminates the biofilm.



Actual SEM (Scanning Electron Micrograph) of a Biofilm before and after treatment with Sterilex® Products.



## Sterilex Animal Health Products

### Sterilex® Ultra-Kleen Solution I and II (Liquid Biocide) Shock Treatment

- Used for annual “shock” treatment
- EPA registered for use in piping systems
- EPA-registered to penetrate and remove biofilm
- Kills and controls bacteria, mold, fungi and algae
- Enhances health and liveability

### Sterilex® Ultra-Kleen (Liquid Biocide) Treatment Maintenance

- Used between flocks to maintain and control biofilm buildup in drinking lines.

### Sterilex® Ultra Disinfectant Cleaner Solution I and II

- Cleans and disinfects environmental surfaces, processing equipment, refrigeration units and trucks
- Kills *Listeria monocytogenes*, *E. coli*, *Salmonella*, *Staphylococcus*, *Pseudomonas*, *Z-bailii*

